

### SPECIFICATIONS

- 1 **Lighting (LED back pan):**  
CNC formed code gauge aluminum  
5-stage pretreatment  
Powder coated gloss white  
750 HR salt spray test  
Built in safety hanger wire attachment points  
Designed for easy access to service electrical components
- 2 **Luminous SkyTile (lens):**  
Lightweight & durable  
Hi-res digital reproduction from proprietary large format film library  
Color-calibrated for 6500 Kelvin light source  
Non-glare matte finish  
Fade resistant pigmented inks containing UV inhibitors  
Designed to fit Luminous SkyTile Elevator
- 3 **Luminous SkyTile Elevator (lens support frame):**  
Light weight aluminum  
Quick and easy installation  
Moisture resistant  
Powder coated, white matte finish to match standard grid  
Compatible with standard 15/16" grid systems  
Precision machined corners, seamless architectural appearance

#### Electrical:

Supplied with 24V DC power system  
Proprietary system which converts 90-264V AC to 24V DC  
See LSC 24PS Power System Technical Specifications  
Dimmer Option Available  
Code gauge TFN wire used throughout, rated for required temperatures  
Pre-wired 24V DC power cables for easy connection  
24V DC input power connection: push-in terminals for 12-16 AWG wire  
Shielded Environments: RF filters supplied by others

	CIRCLE (DIAMETER)					
	5'	6'	8'-6.5/8"	10'	11'-9"	14'-3"
WATTS	124.8	163.2	331.2	451.2	614.4	936
UL/CSA						
AMPS @ 115/230VAC	3.5/1.7	2.5/1.5	6.5/3.5	12/7.5 <sup>1</sup>	11.2/5.6	17/8
CE						
AMPS @ 115/230VAC	3.5/1.7	2.5/1.5	6.5/3.5	8.8/4.2	11.2/5.6	17/8

<sup>1</sup>UL/CSA 600 watt power supply NOT auto-ranging

#### Lamps:

120 high-efficiency white LEDs per 2'x2' fixture  
6500 Kelvin light temperature – cool daylight  
80,000 hour rated life (80% @ 40,000 hrs.)

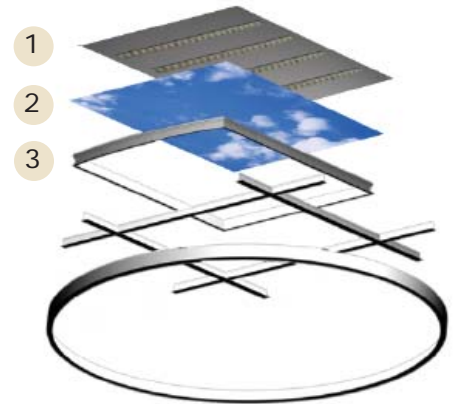
#### Installation:

Elevators and tiles easily installed into standard 15/16" grid systems.  
Circular SkyCeilings are designed to be recessed into a variety of hard ceilings.

#### Factory Installed Options:

Seismic  
Anti-bacterial coating

### LSC Circular LED

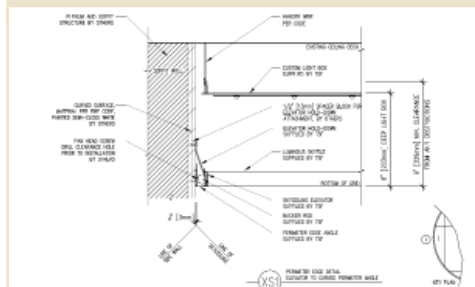


Pre-cut ceiling grid pieces and the circle perimeter

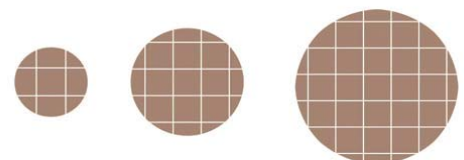
#### Key Attributes:

15/16" ceiling grid mount  
High-efficiency white LEDs  
24 watts, 2400 lm/2'x2' fixture  
6500 Kelvin – cool daylight  
Non-ferrous, RF-free construction

### DIMENSIONAL DATA



### SAMPLE CONFIGURATIONS



Custom configurations also available