

### SPECIFICATIONS

- 1 **Lighting (fluorescent single lamp fixture):**  
CNC formed code gauge cold rolled steel  
5-stage pretreatment  
Powder coated gloss white  
750 HR salt spray test  
Built in safety hanger wire attachment points  
Designed for easy access to service electrical components/lamps
- 2 **Luminous SkyTile (lens):**  
Lightweight a durable  
Hi-res digital reproduction from proprietary large format film library  
Color-calibrated for 6500 Kelvin light source  
Non-glare matte finish  
Fade resistant pigmented inks containing UV inhibitors  
Designed to fit Luminous SkyTile Elevator
- 3 **Luminous SkyTile Elevator (frame):**  
Light weight  
Quick and easy installation  
Moisture resistant  
Powder coated, white matte finish to match standard grid  
Compatible with standard 15/16" grid systems  
Precision machined corners, seamless architectural appearance

#### Electrical:

All UL and CSA non-dimmable fixtures rated for UVI (universal input voltage):  
120-277VAC, 50/60Hz  
All UL and CSA dimmable fixtures voltage specific:  
120VAC or 277VAC, 50/60Hz  
All CE fixtures:  
220-240VAC, 50/60Hz  
Code gauge TFN wire used throughout, rated for required temperatures  
7/8" knockout for easy electrical connection

#### Power Consumption (Amps):

	CIRCLE (DIAMETER)					
	5'	6'	8'-6 5/8"	10'	11'-9"	14'-3"
UL/CSA						
NON-DIM - 120/277V	1.3/0.57	1.96/0.86	3.92/1.72	5.6/2.44	7.64/3.34	10.64/4.66
DIM <sup>1</sup> - 120V	0.71	0.7	3.98	5.6	7.7	10.76
DIM <sup>1</sup> - 277V	0.57	0.86	1.72	2.44	3.34	4.66
CE						
NON-DIM - 220/240V	1.26/0.49	1.8/0.7	2.52/0.98	3.6/1.4	4.68/2.82	6.84/3.66
DIM <sup>2</sup> - 220V/240V	0.6/0.53	0.92/0.82	2.02/1.88	2.92/2.72	4.0/3.78	5.5/5.12
1 - Dimmable from 1 - 100% through supplied 3-wire fluorescent dimmer						
2 - Dimmable from 1 - 100% through low voltage 1-10V dimmer						

#### Lamps:

T5 fluorescent  
Most energy efficient in fluorescents  
Lowest CO2 emissions (40% less than a TL-D lamp, 26% less than TLD 800)  
Lowest mercury content in the industry, 100% lead free  
Product dimension only 16mm (.63") diameter, 40% less compared to TLD lamps

#### Installation:

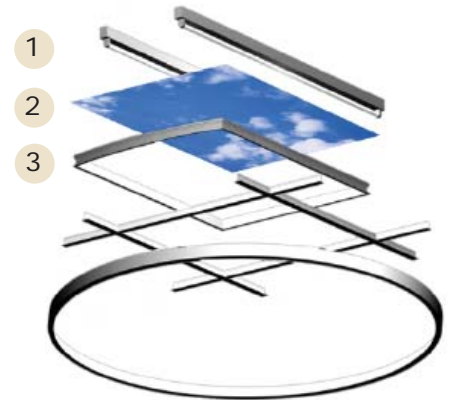
Elevators and tiles easily installed into standard 15/16" grid systems.  
Circular SkyCeilings are designed to be recessed into a variety of hard ceilings.

#### Factory Installed Options:

Seismic

**Listings:** Fluorescent Surface-mounted Luminaires UL, CSA and CE certified

### LSC Circular T5

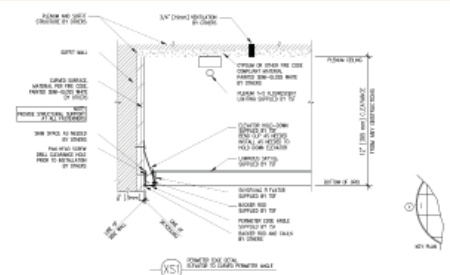


Pre-cut ceiling grid pieces and the circle perimeter

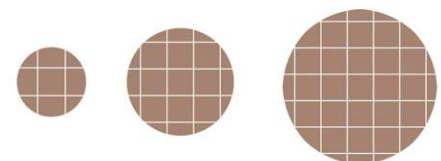
#### Key Attributes:

Fluorescent Surface-mounted  
Luminaires UL, CSA and CE certified.

### DIMENSIONAL DATA



### SAMPLE CONFIGURATIONS



Custom configurations also available