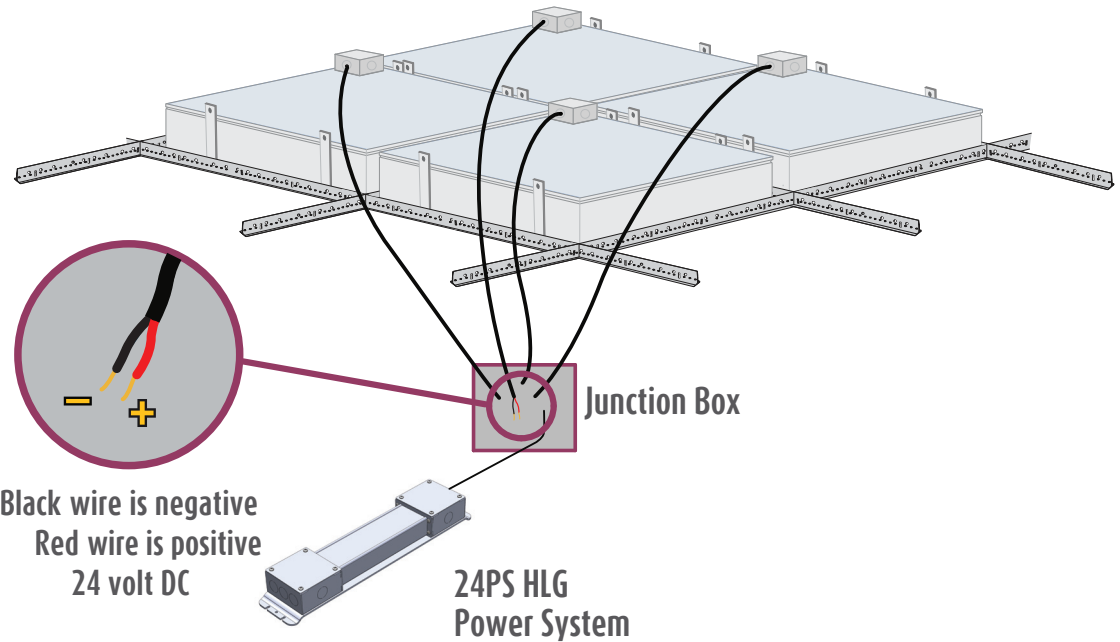


Custom EcoPlus Electrical Instructions (24PS HLG)



Installation Packet Includes:

Custom EcoPlus Electrical Instructions (24PS HLG)

EL001250 - Without Dimmer
EL001251 - With Dimmer
EL001201 - Lutron Diva Dimmer with Multiple Power Systems
EL001202 - Lutron Lyneo Dimmer with Multiple Power Systems
Wire Sizing Chart

Electrical Layout EL1 & EL2

Sky Factory 24PS HLG Power System Installation

For technical support at any time during the installation, please call us **toll free at 866-759-3228**.
We want your installation to go as smoothly as possible. Thank you for choosing The Sky Factory.

Custom EcoPlus electrical requirements:

All EcoPlus fixtures are 24V DC only.

EcoPlus fixtures must be mounted in dry locations only.

EcoPlus fixtures must be powered by provided UL, CSA and CE Compliant 24PS HLG Power System

Sky Factory 24PS HLG Power System:

Input (Typ): 90-305V, 47 - 63 Hz

Output: 24V DC

Maximum Watts (useable) per power system: 600 Watts

Available sizes: 40W, 60W, 80W, 100W, 120W, 150W, 185W, 240W, 320W, 480W, 600W

Power System aluminum enclosure

Mounted on baseplate with junction box on input and output ends

For mounting dimensions and weights, see "Sky Factory 24PS HLG Power System Installation"

For power system wire sizes, see EL001250 and EL001251

Power system must have 2" clearance for air flow. Wall mount recommended.

Power system must be mounted in dry locations.

For installation specific number of power systems and number of fixtures per power system,

see Electrical Layout EL1 & EL2

For EcoPlus with 24PS HLG Power System general wiring diagrams, see

EL001250-EL001251

For single dimmer control and multiple power systems, see

EL001201-EL001202

RF filter, if used, is not provided by the Sky Factory. One filter per power system required.

Custom EcoPlus electrical requirements (cont'd):

Sky Factory provided dimmer control (where specified):

Lutron Diva DVSTV 0 - 10V sliding dimmer/switch (UL & CSA compliant)

Input: auto-ranging 120 - 277V AC

Mounts in standard single-gang electrical box

White standard, other colors available on request

Lutron Lyneo preset 0 - 10V sliding dimmer/switch and external relay (CE compliant)

Input: 220 - 240V AC

Mounts in standard UK style single gang backbox. 35mm depth recommended.

For dimming requirements, see page 5.

For dimmer wiring diagrams, see dimmer control (and relay where specified) and

EL001251-EL001202

Electrical work must be performed by a qualified electrician who is familiar with DC lighting systems and must conform to all local and national codes.

Non-Dimmable and Dimmable Certification:

ES22 Series, ES24 Series, ES26 Series, ES33 Series, ES34 Series, ES36 Series, ES44 Series, ESCST Series, EP22 Series, EP24 Series, EP26 Series, EP33 Series, EP34 Series, EP36 Series, EP44 Series and EPCST Series fixtures when used with 24PS HLG Power System UL, CSA and CE Listed by Intertek Group plc

Step 1: Wiring the EcoPlus fixtures to the power system

See also drawings and charts on pages 6-10 and Electrical Layout EL1 & EL2



Notice: The LED fixtures are 24V DC ONLY.
AC voltage connected directly to the fixtures
will destroy the lighting system.

Fixtures are wired together in single or multiple circuits.

Each circuit is dedicated to a single power system and may be arranged in rows or clusters, depending on installation.

For installation specific number of fixtures per power system, see Electrical Layout EL2

A junction box with 1/2" trade size knock-outs is attached on top corner of each fixture.

- Power leads inside fixture junction box are polarized, red (+) and black (-).
- Wire size 18 AWG stranded.
- NOTE: Where a fixture has multiple junction boxes, each junction box will be included in a separate circuit.

Wiring from fixtures to V DC side of provided power system is polarized, positive (+) to positive (+)
and negative (-) to negative (-):

EcoPlus fixture red "+ " to power system **Vo+** [sheathed in **RED**]

EcoPlus fixture black "- " to power system **Vo-** [sheathed in **BLACK**]

For power system V DC wire sizes, see EL001250 and EL001251

Wire and additional junction boxes from the fixtures to the power system supplied by others.

Voltage drop will occur over long distances. For appropriate lengths and gauges, see
Wire Sizing Chart

Wire gauge must conform to local and national codes.

Step 2: Wiring the power system to source V AC

Run power to V AC side of the power system. For power system V AC wire size, see EL001250 and EL001251

Line to power system **ACL** [sheathed in **BLACK**]

Neutral to power system **ACN** [sheathed in **WHITE**]

Ground to power system  (**GREEN/YELLOW**)

Wire gauge must conform to local and national codes.

Install the power switch on the V AC input side of the power system.

Step 3: Dimming requirements

Contact the Sky Factory if you plan on using a dimming system provided by others.



Notice: Dimming using non-approved systems may permanently damage LED's and will void the warranty!

Wiring a Sky Factory provided dimmer control:

To wire the 0-10V dimmer control (and external relay where specified), refer to wiring diagram included with dimmer and relay and EL001251-EL001202

Power system **DIM+** sheathed in **GRAY**

Power system **DIM-** sheathed in **BLACK**

Step 4: Checking the polarity



Notice: CHECK THE POLARITY BEFORE TURNING ON POWER. MAKE SURE:

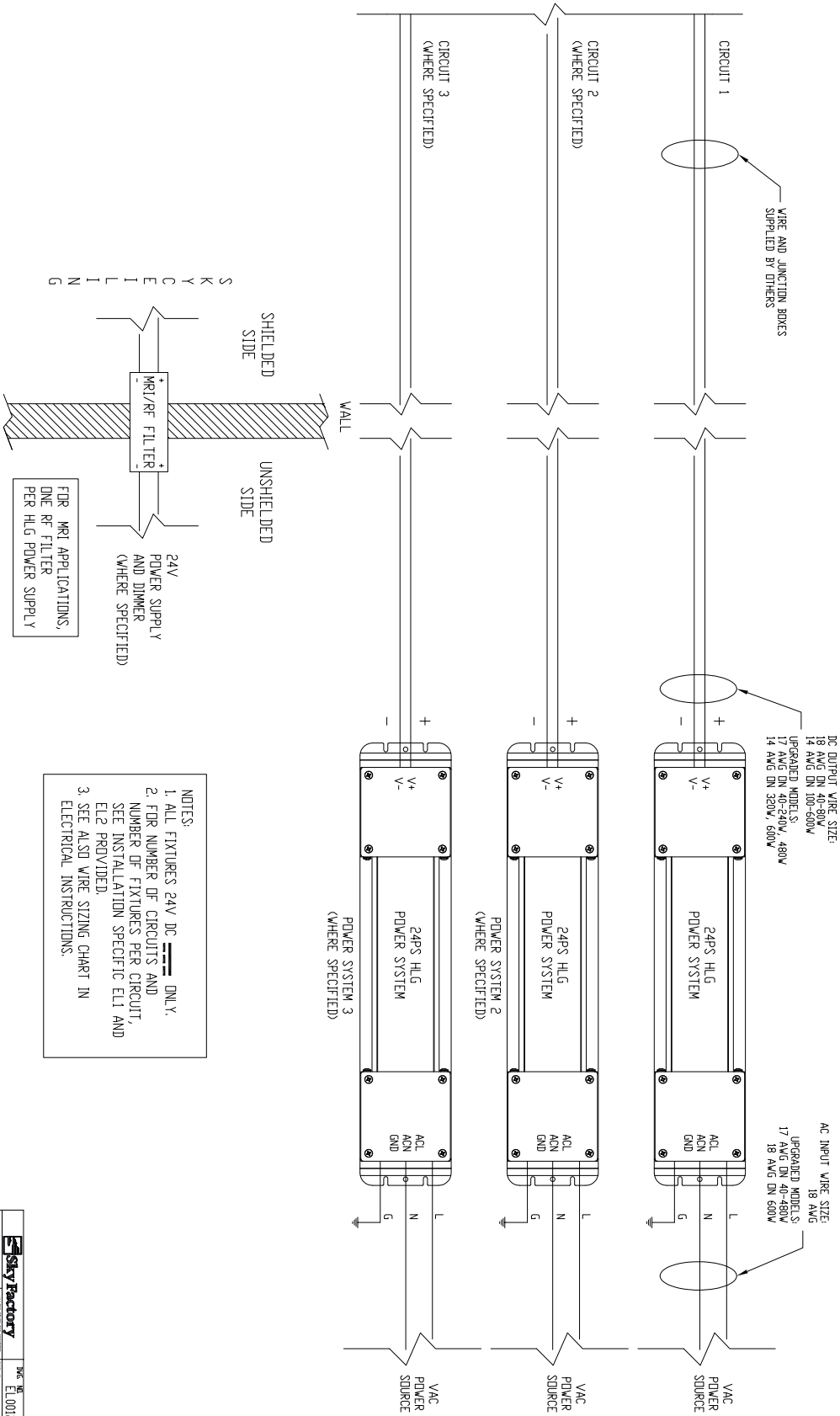
Red wires on the fixtures go to the "+" terminals of the power supply

Black wires on the fixtures go to the "-" terminals of the power supply

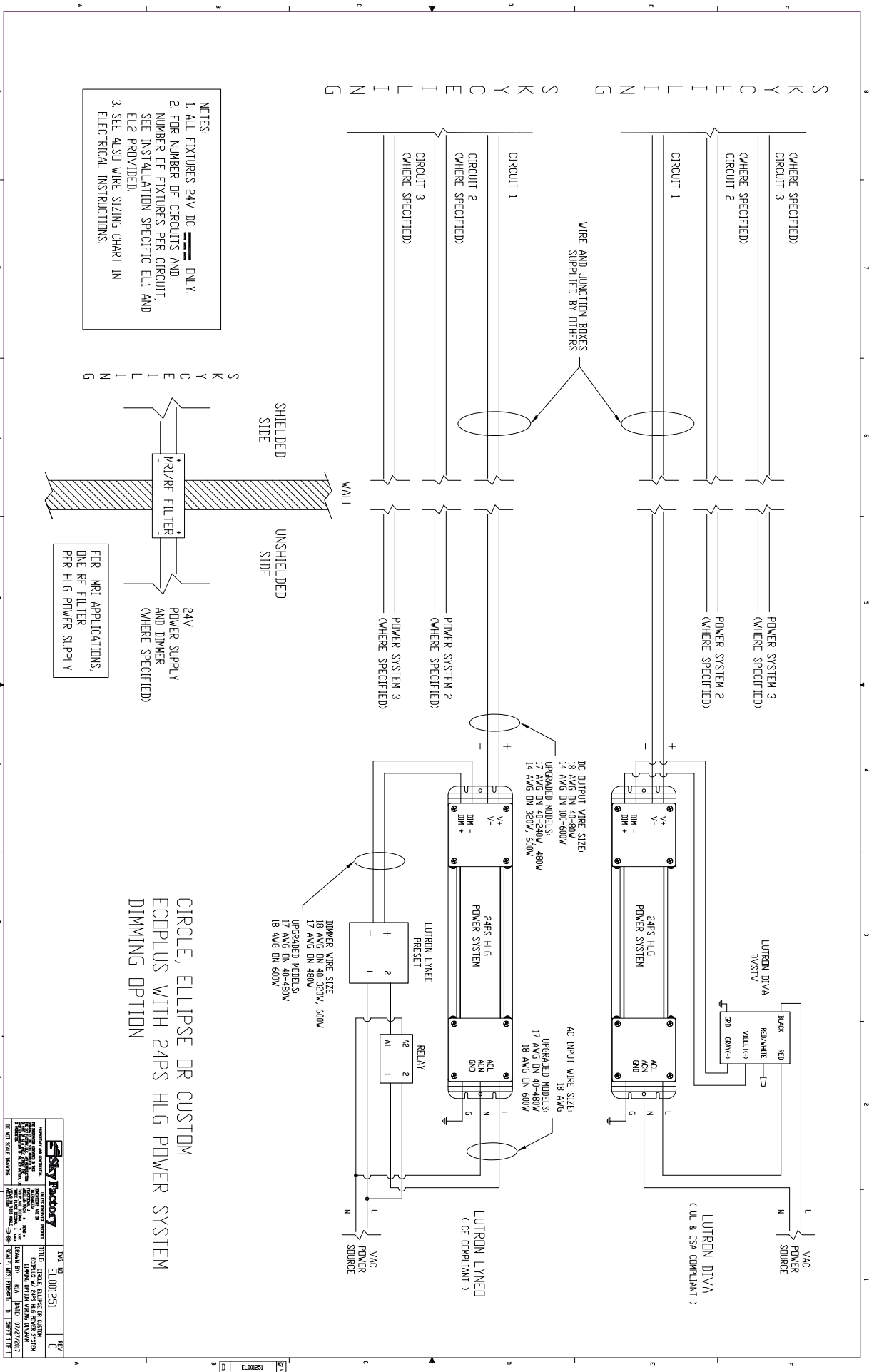
IF THE SYSTEM IS WIRED BACKWARD, IT WILL DESTROY THE LED'S!

CIRCLE, ELLIPSE OR CUSTOM
ECOPUS WITH 24PS HLG POWER SYSTEM
NON-DIMMING OPTION

S
K
Y
F
A
C
T
O
R
Y

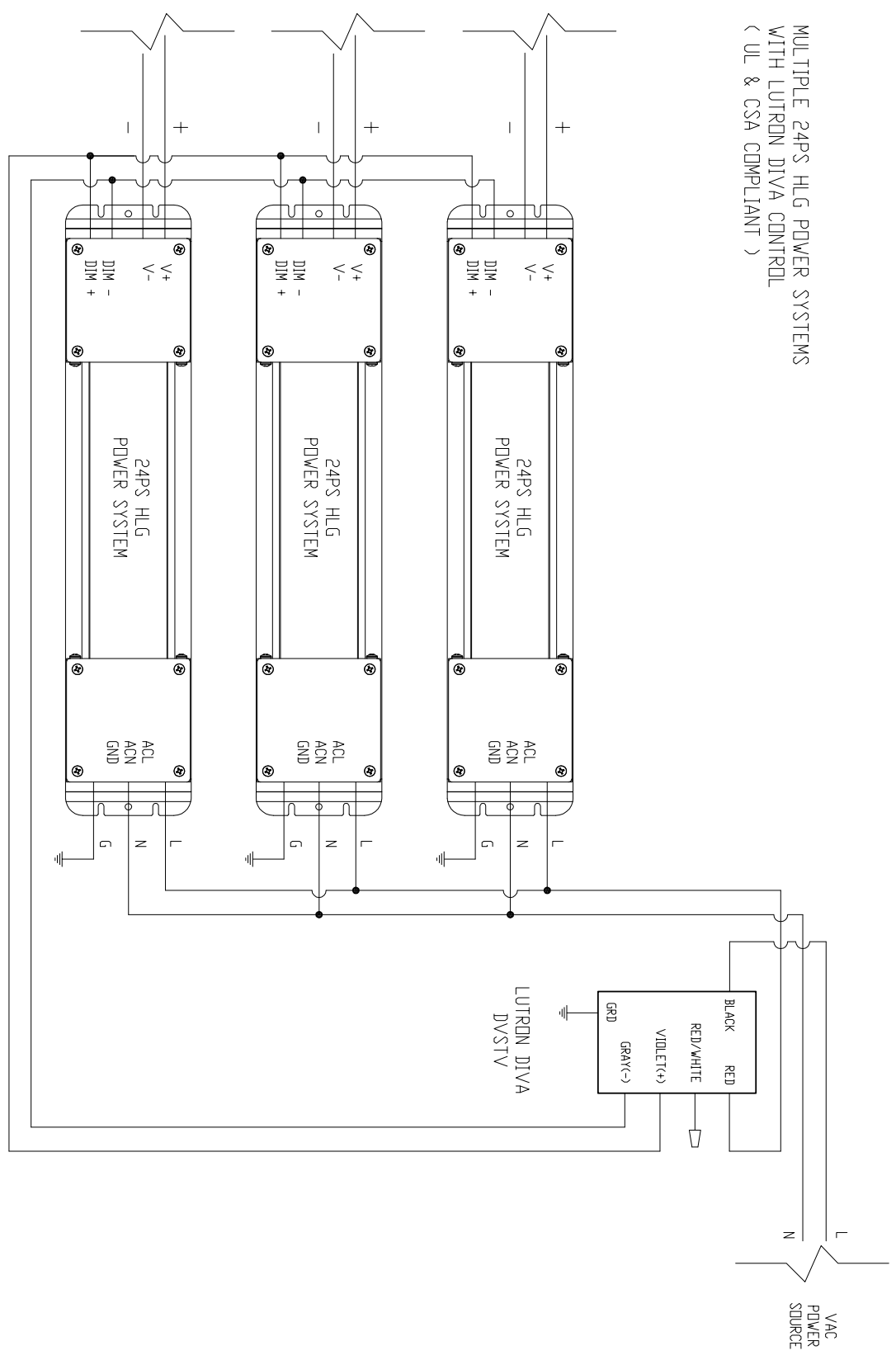


Sky Factory	THE SKY FACTORY
10000 10th Avenue, Suite 1000 Denver, CO 80202 Tel: 303.733.1000 www.skyfactory.com	10000 10th Avenue, Suite 1000 Denver, CO 80202 Tel: 303.733.1000 www.skyfactory.com
PROJECT NO. ELO01250	DATE: 07/27/2017
BY: [Signature]	SCALE: NOT SHOWN - 3/1 SHEET 1 OF 1



Sky Factory	DATE: 01/25/21	REV: C
PROJECT: SKY FACTORY IN CHINA	TITLE: SKY FACTORY IN CHINA	
PROJECT NO: 10000000000000000000	DRAWING NO: 10000000000000000000	
PROJECT MANAGER: [Name]	DESIGNER: [Name]	
PROJECT ENGINEER: [Name]	CHECKER: [Name]	
PROJECT ARCHITECT: [Name]	DATE: 02/27/2017	
PROJECT ELECTRICAL: [Name]	SHEET 1 OF 1	

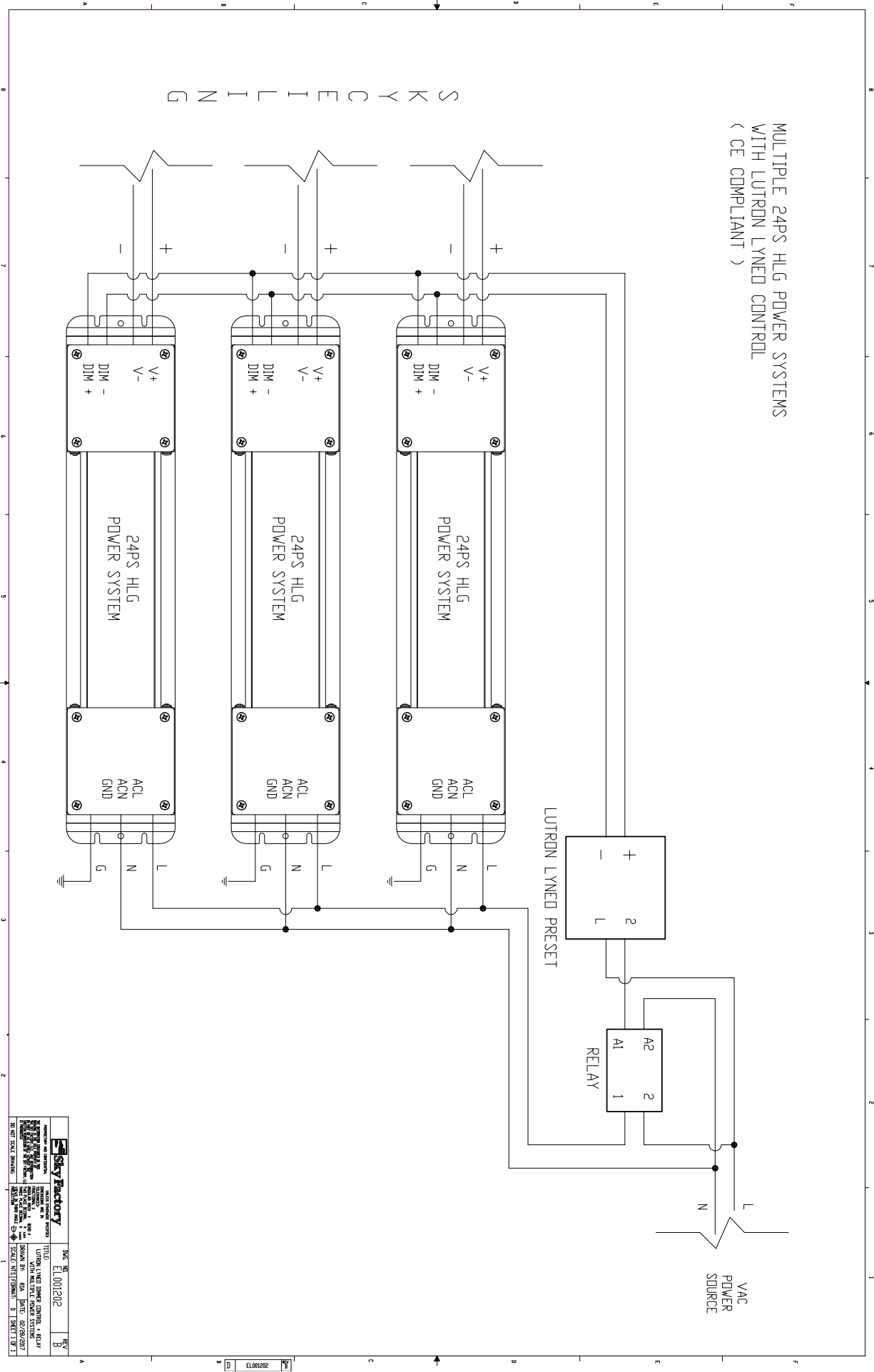
MULTIPLE 24PS HLG POWER SYSTEMS
 WITH LUTRON DIVA CONTROL
 (UL & CSA COMPLIANT)



S K Y F A C T O R Y

TITLE: LUTRON DIVA DIMMER CONTROL WITH MULTIPLE HLG POWER SYSTEMS DATE: 02/28/2017 SCALE: 1/8" = 1'-0"	SHEET: 1 OF 1

MULTIPLE 24PS HLG POWER SYSTEMS
 WITH LUTRON LYNEO CONTROL
 (CE COMPLIANT)



Sky Factory MANUFACTURER OF SKYFACTORY SKYCEILING SYSTEMS 10000 10th Street, Suite 100 Dallas, TX 75243 Tel: 972.261.1111 Fax: 972.261.1112 Email: info@skyfactory.com		DATE: 08/28/2017 DRAWN BY: RJA CHECKED BY: BJA SCALE: AS SHOWN
TITLE: SYSTEM WITH MULTIPLE POWER SYSTEMS SHEET NO. 08/28/2017 SHEET 1 OF 1	SKY ID: ELO01202	REV: B

ELO01202

Wire Sizing Chart

This chart is a guideline for recommended wiring practice.

Applies to 24V DC power only, i.e. from “fixture to power system.”

Not meant for “V AC to power system” nor “dimmer to power system.”

Wire sizes in AWG Conversion chart below.

Distance: Feet (Meters)	AWG for 5A	AWG for 10A	AWG for 15A
20 (6)	18	14	12
30 (9)	16	12	10
40 (12)	14	10	10
50 (15)	12	10	*
60 (18)	12	10	*
80 (24)	10	*	*
100 (30)	10	*	*

* Terminal block wire range #10 - #22 Awg.

AWG	MM
10	6.271
11	5.156
12	3.302
13	2.629
14	2.088
15	1.652
16	1.308
17	1.039
18	0.823